

Picture Perfect Match System

Features:

Low cost:

- Least expensive camera system available today
- Add additional camera assemblies for under \$400.00

Easy to Setup:

- No cams to adjust - timing is done on the monitor
- Simply press one button and the camera position and timing are set
- The timing of each camera can be individually adjusted
- Timing can be readjusted while the machine is running
- No unplugging and replugging in video cables to move the cameras
- See all cameras live at the same time and adjust brightness, contrast, etc. individually
- If the camera is upside down to the image, one click rotates the picture

Easy to use:

- A matched image is always on the screen, no waiting for the last image to insure the match is still correct
- Clear color images that have adjustments for each camera for brightness, contrast, sharpness, saturation, hue, and more
- View a history of the last 10 images to locate a mismatch
- Zoom in to get a larger image

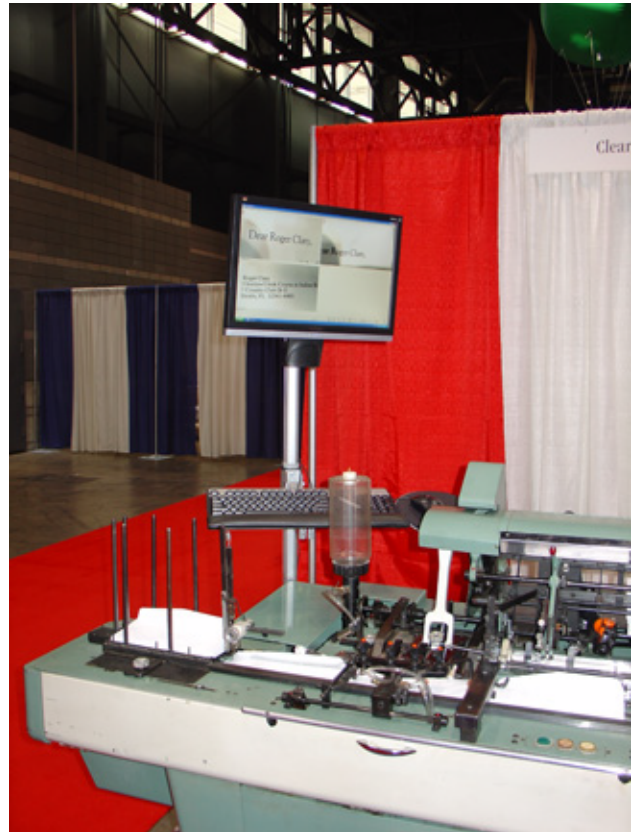
Accuracy:

- View every piece if desired, images can set to update from one to twenty cycles no matter how far apart the cameras are

Durability:

- No flimsy cable connection
- Connections are via USB so power and video go through one cable

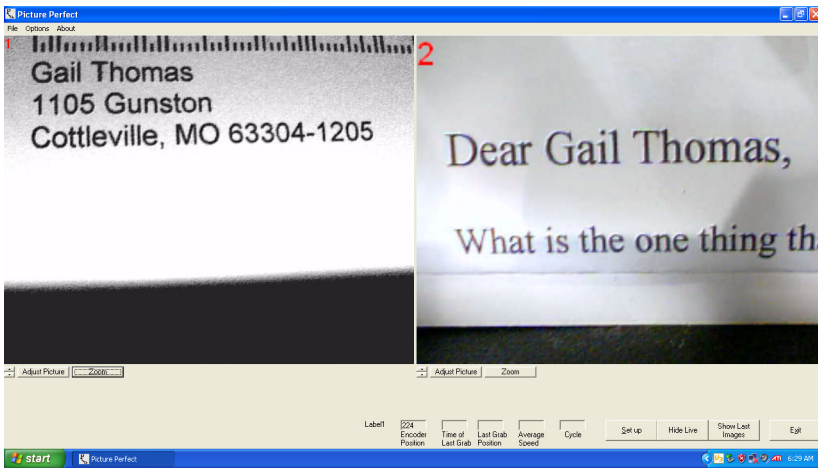
The Picture Perfect is designed as a low cost alternative to many automatic document vision systems. Picture Perfect also has no limitations on font type, angle, or quality and needs no barcode. It's well suited for the customer that demands the most personalized look.



Clear Image Technologies

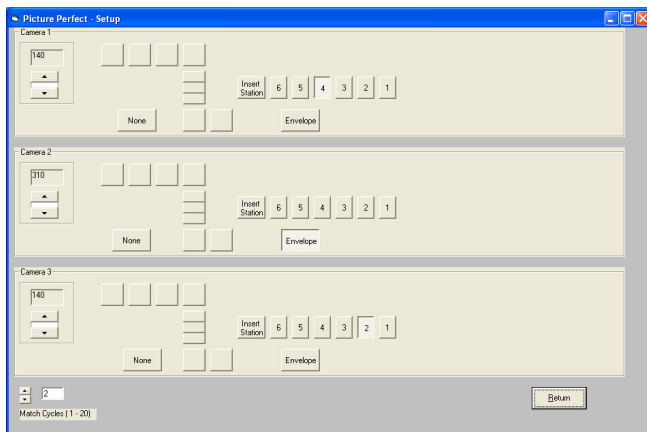
www.clearimagetechnologies.com

314-853-5867



The Run Screen

Picture Perfect stores each image and displays them as frequently as desired. The images remain on the monitor until the next set of images is ready. This means that anytime the operator looks at the screen, a full matched set is there. You can display every piece if needed.



The Setup Screen

The setup screen is an intuitive graphic interface that can be configured to resemble your machine. Press the buttons that correspond with the locations of the cameras and Picture Perfect automatically determines the correct timing for the cameras.

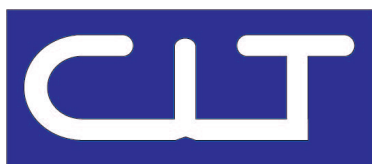


The Cameras

The cameras are USB cameras that are mounted on a flexible stand which is attached to a magnetic base. The power and video use a single cable. The cable is routed through the middle of the stand which provides protection for the cable from moving parts of the machine.

Optional upgrades include: Optical Character Recognition, Barcode Recognition, Read and Print, Image capture recording, OCR end of machine recording, and Selective Stations.

Please note: This is a visual match system. Picture Perfect displays the images on the screen for operator inspection.



Clear Image Technologies

www.clearimagetechnologies.com

314-853-5867